



**Wyoming Primary Facilities
Community Forum 3**

6:30 p.m. Monday, May 13 at Wyoming High School

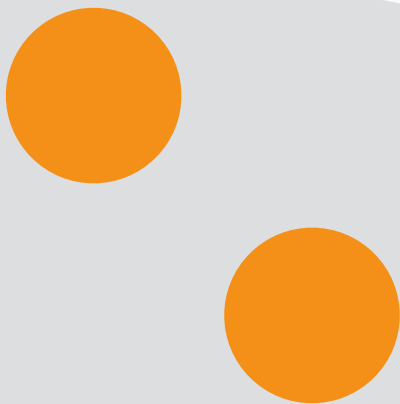
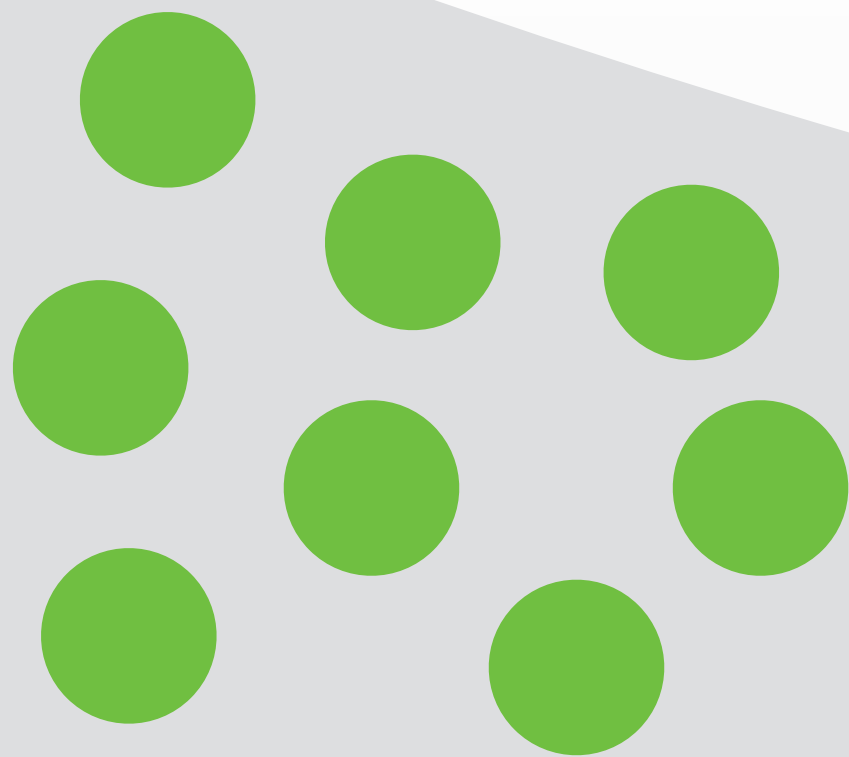
AGENDA

- Welcome
- Process
- Finance
- Community Survey Results
- Final Master Plan Selection
- Exploring Options for Temporary School sites
- Draft Project Schedule
- Next Steps
- Chat with Steering Committee

Fall 2023

Early Spring 2024

Late Spring 2024



Options Phase
Phase 1 Planning Work Review
Community Conversations
Traffic Analysis
Geotechnical Report
Defined Budget
Facilities Steering Committee
Board of Education
Community Forum 1
Online Feedback

Options Refinement Phase
Facilities Steering Committee
Board of Education
Community Forum 2
Statistically Valid Survey

Final Plan Selection Phase
Facilities Steering Committee
Board of Education
Community Forum 3
Board of Education Decision
Community Vote - Nov. 5, 2024

PROCESS
Wyoming Primary Facilities Master Plan

AGENDA

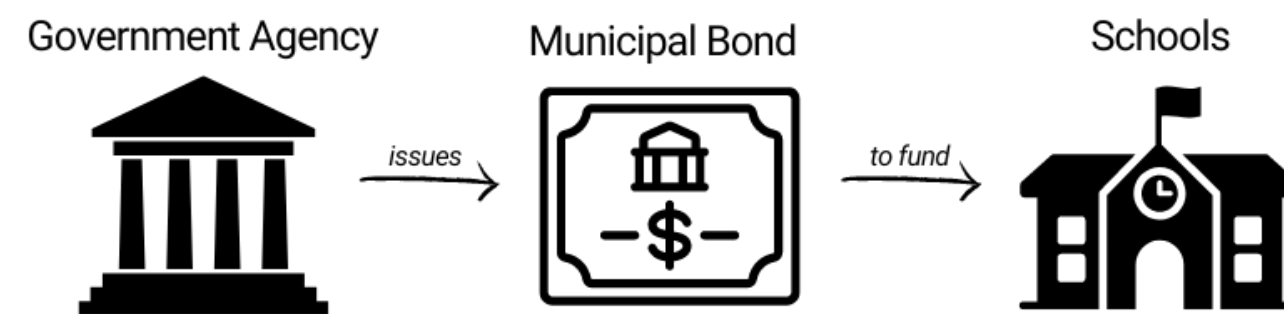
- Welcome
- Process
- **Finance**
- Community Survey Results
- Final Master Plan Selection
- Exploring Options for Temporary School sites
- Draft Project Schedule
- Next Steps
- Chat with Steering Committee

SCHOOL DISTRICT BOND ISSUE

A property tax levy for a specific dollar amount to be borrowed to finance construction.

The District sells bond (issues debt) and receives the revenue for the project.

Over the next 37 years, property taxes are assessed annually and collected by the District to pay the principal and interest payments on the debt.



How are the taxes assessed annually?

Mills

A term used to express tax rates: *1/10 of 1% = .001 OR \$1 per \$1000 of assessed value*

Assessed Valuation

35% of the property's appraised market value

\$100,000 market value = \$35,000 assessed valuation

Millage is calculated on assessed valuation

1 mill would cost the owner of a \$100,000 home = \$35 per year

FINANCE

Wyoming Primary Facilities Master Plan

WYOMING CITY SCHOOL DISTRICT PREVIOUS BOND ISSUES

Wyoming City Schools has 2 bond issues currently outstanding:



Wyoming High School 1998 Issue – 3.36 mills

\$24,000,000 from May 1998 voted at 8.2 mills

Final payment December 2024



Wyoming Middle School 2012 Issue – 2.64 mills

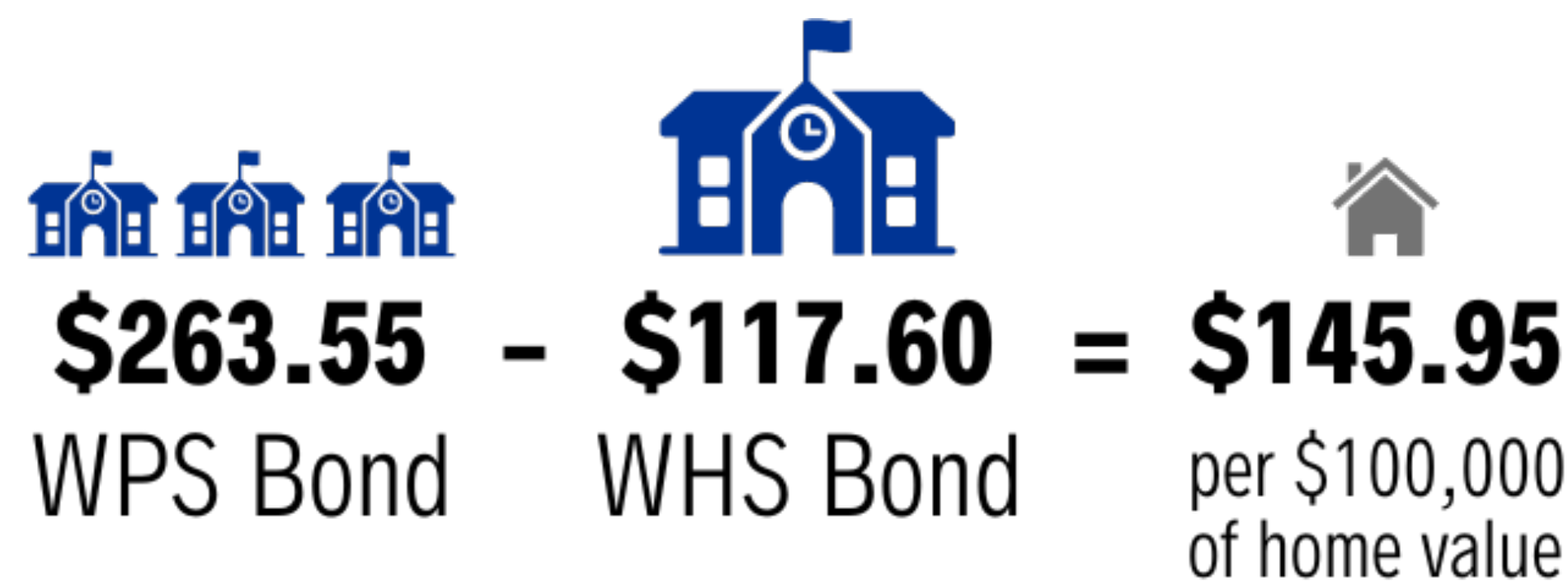
\$25,037,114 from March 2012 voted at 4.79 mills

FINANCE

Wyoming Primary Facilities Master Plan

COST TO HOMEOWNERS

A new \$68.4 bond issue for Wyoming Primary Schools is estimated to be a 7.53 mills tax levy.

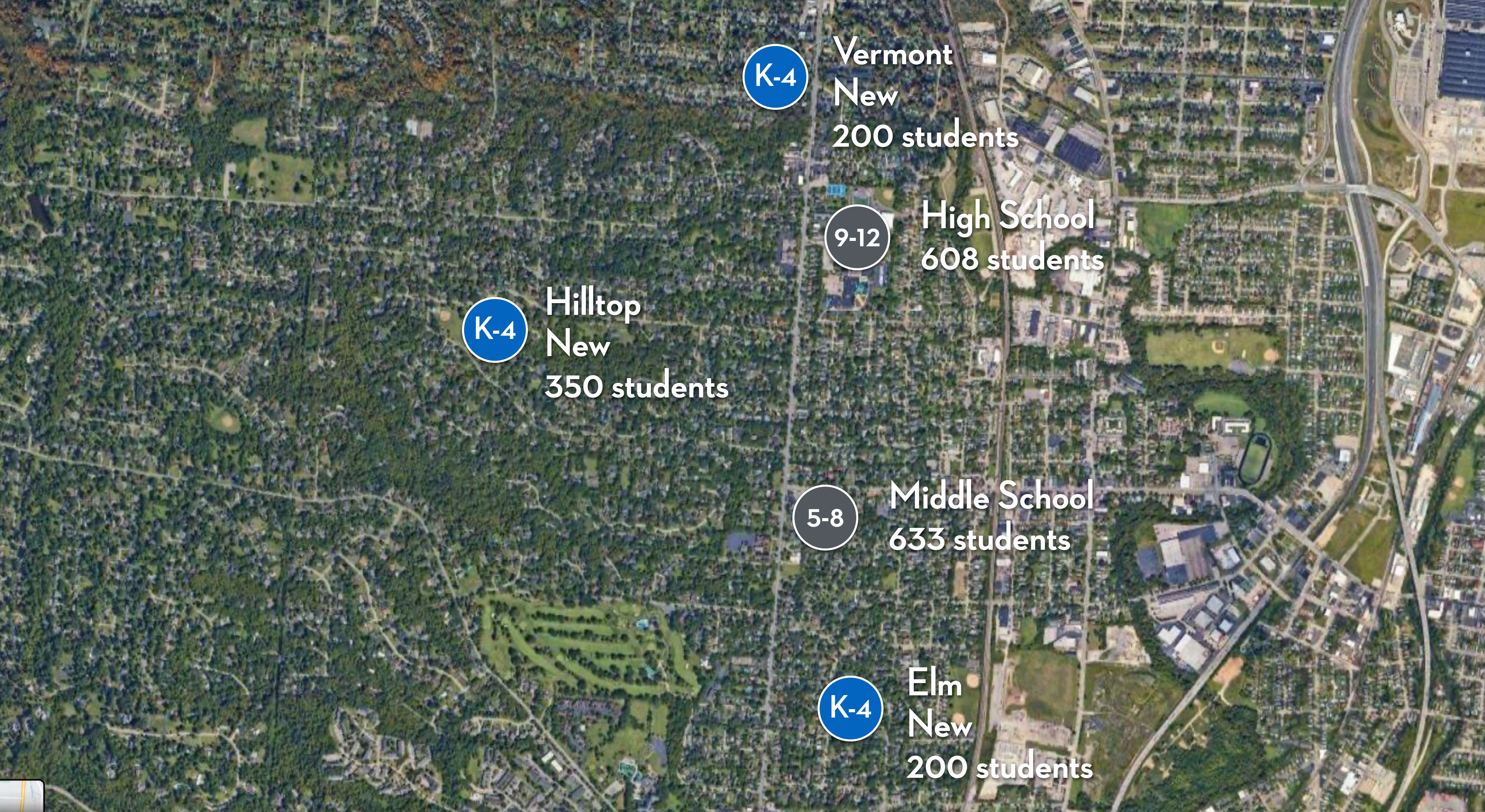


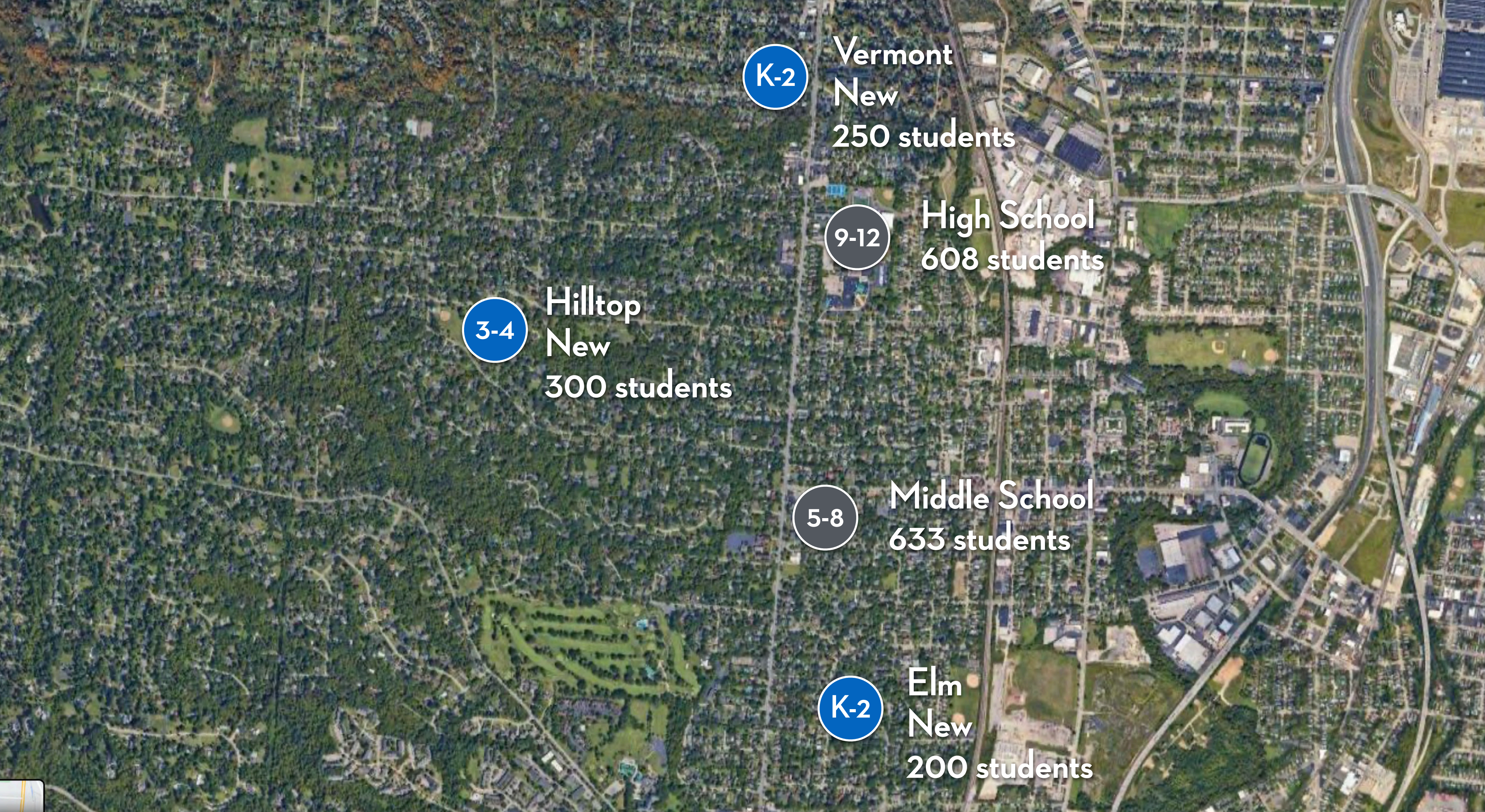
Annual tax increase on a \$100,000 home for 7.53 mills = \$263.55.
WHS bond paid off on December 31, 2024 saving 3.36 mills = \$117.60
Net cost is 4.17 mills = \$145.95

FINANCE

AGENDA

- Welcome
- Process
- Finance
- **Community Survey Results**
- Final Master Plan Selection
- Exploring Options for Temporary School sites
- Draft Project Schedule
- Next Steps
- Chat with Steering Committee





WYOMING CITY SCHOOL DISTRICT FACILITIES STUDY

2024 Public Opinion Research Results

March, 2024

fallonresearch.com

Methods

This opinion research data was gathered through a combination of live telephone interviews and secure SMS/text-to-web surveys conducted with 207 adults 18 years of age or older residing within the Wyoming City School District of Hamilton County, Ohio, who had valid residential, VOIP or cellular telephone numbers.

The interviews and surveys were completed during the period of March 5, 2024 through March 19, 2024.

The overall estimated margin of sampling error is +/- 6.81 percent, based on a confidence level of 95 percent, although it varies for each individual question. This means that if this survey were repeated, 95 times out of 100 the results would be within plus or minus 6.81 percent of those provided herein.

Some adjustments were made to weight the results toward estimates of demographic and geographic characteristics of the adult population within the school district, in order to account for under- and over-sampling that normally occurs as a result of the random selection process, and to ensure that all major sub-groups are represented in proportion to their actual percentages.

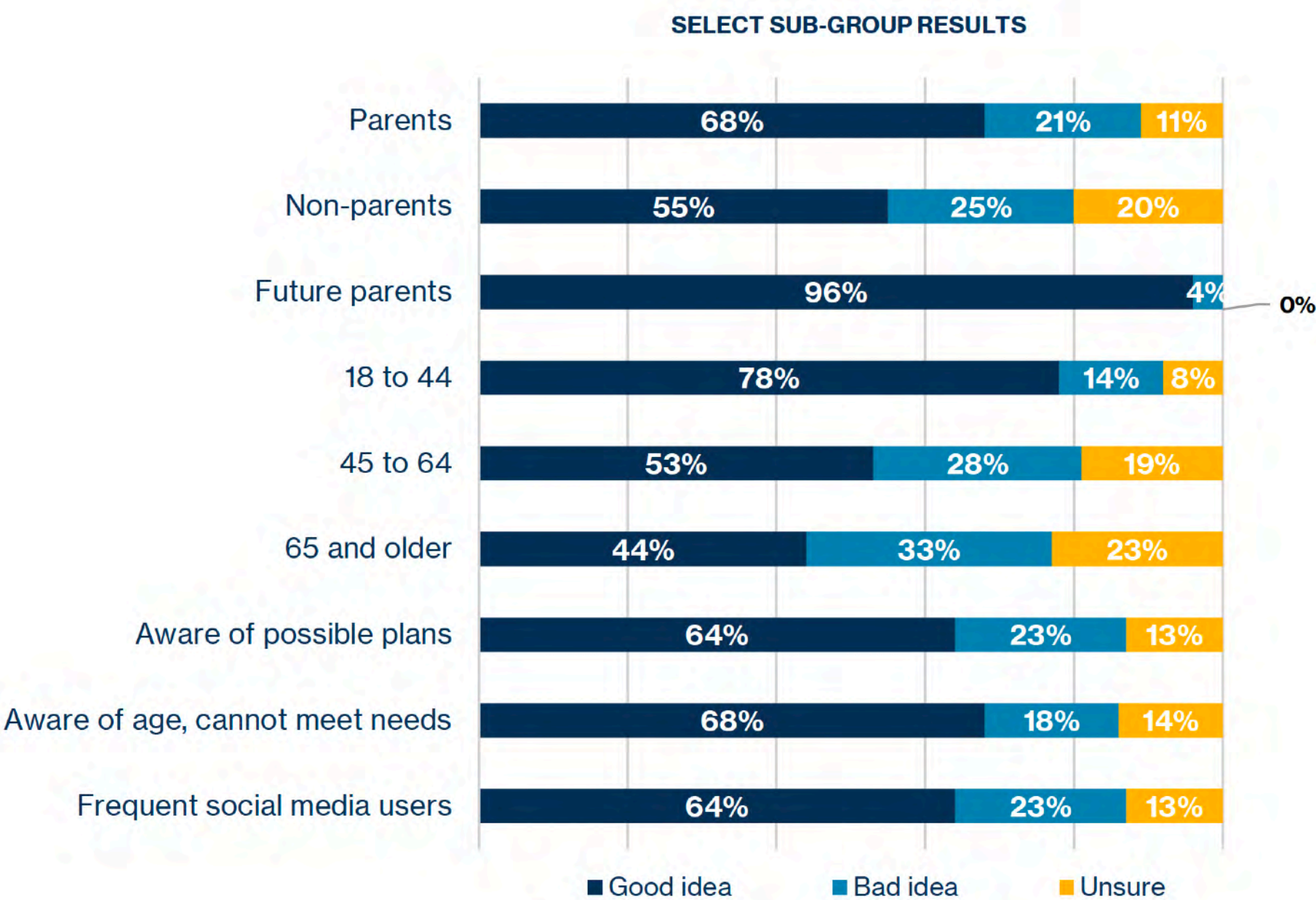
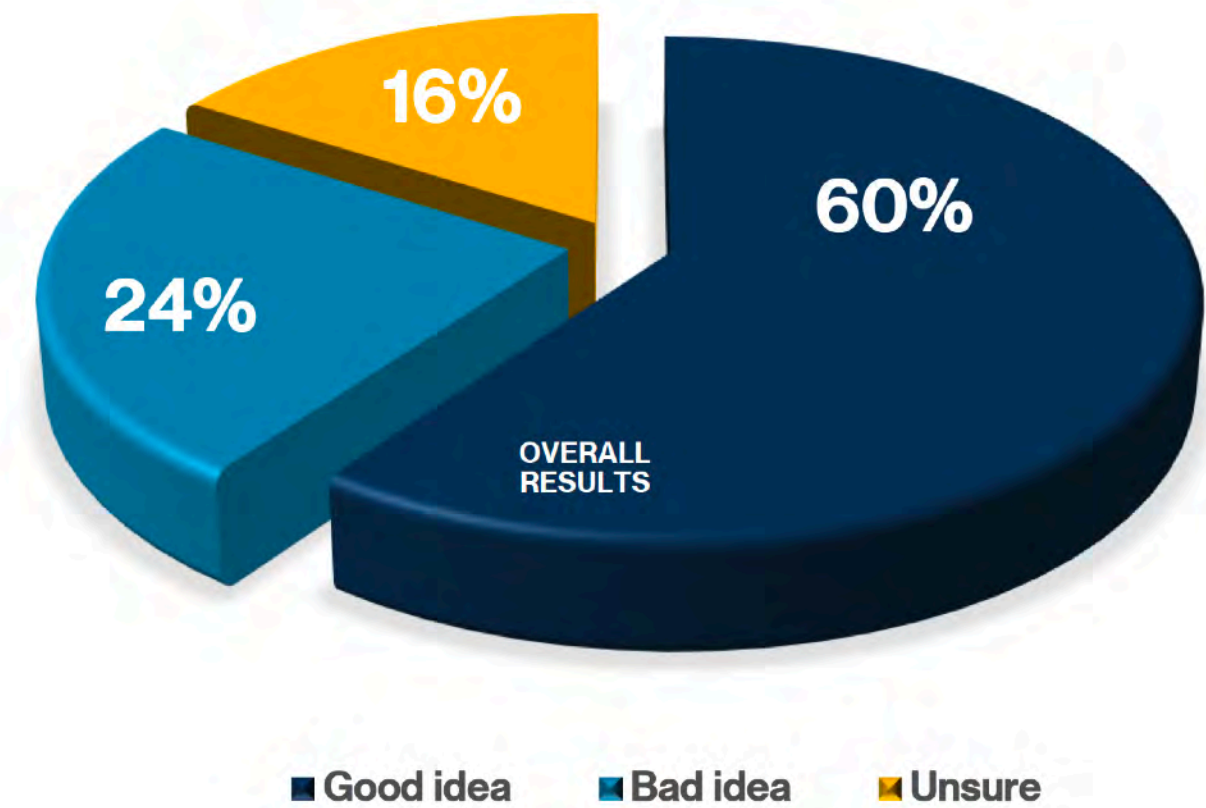
Like all polls, this opinion survey research is subject to other possible sources of error, such as unintentional bias in the wording of questions, data-entry error and nonresponse bias.

Due to computational rounding, not all results add up to 100 percent.

The results are presented in a different order than the questions were asked.

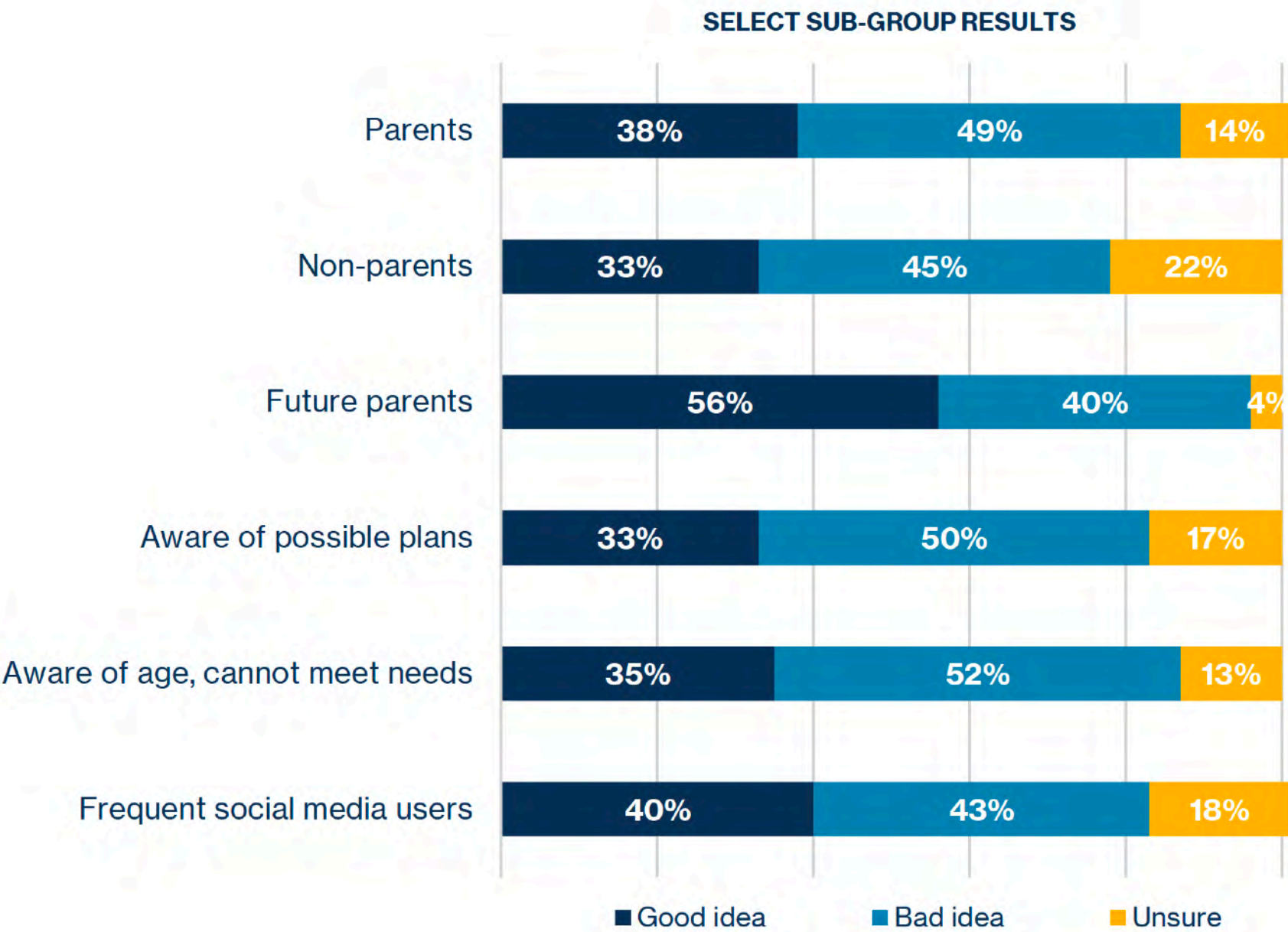
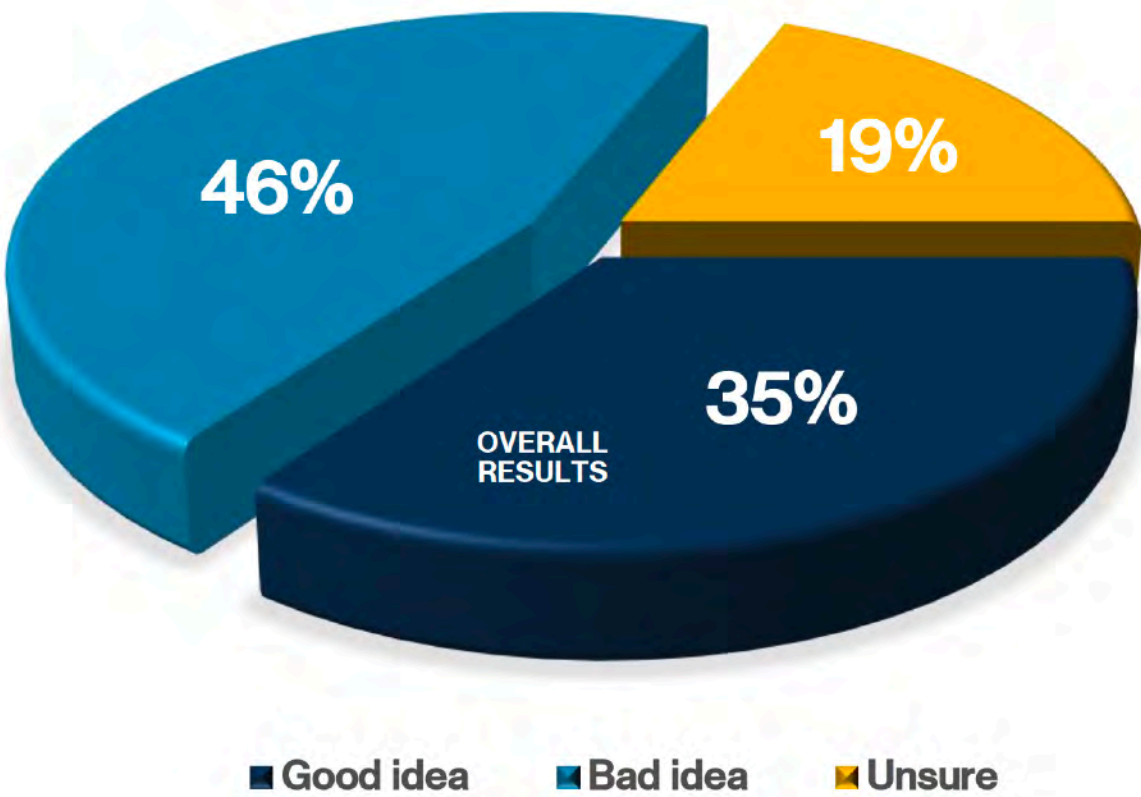
Same Sites Option

Do you think it is a good idea or bad idea to replace all 3 of the current primary schools with new kindergarten through grade 4 school buildings that would all be located in the same locations?



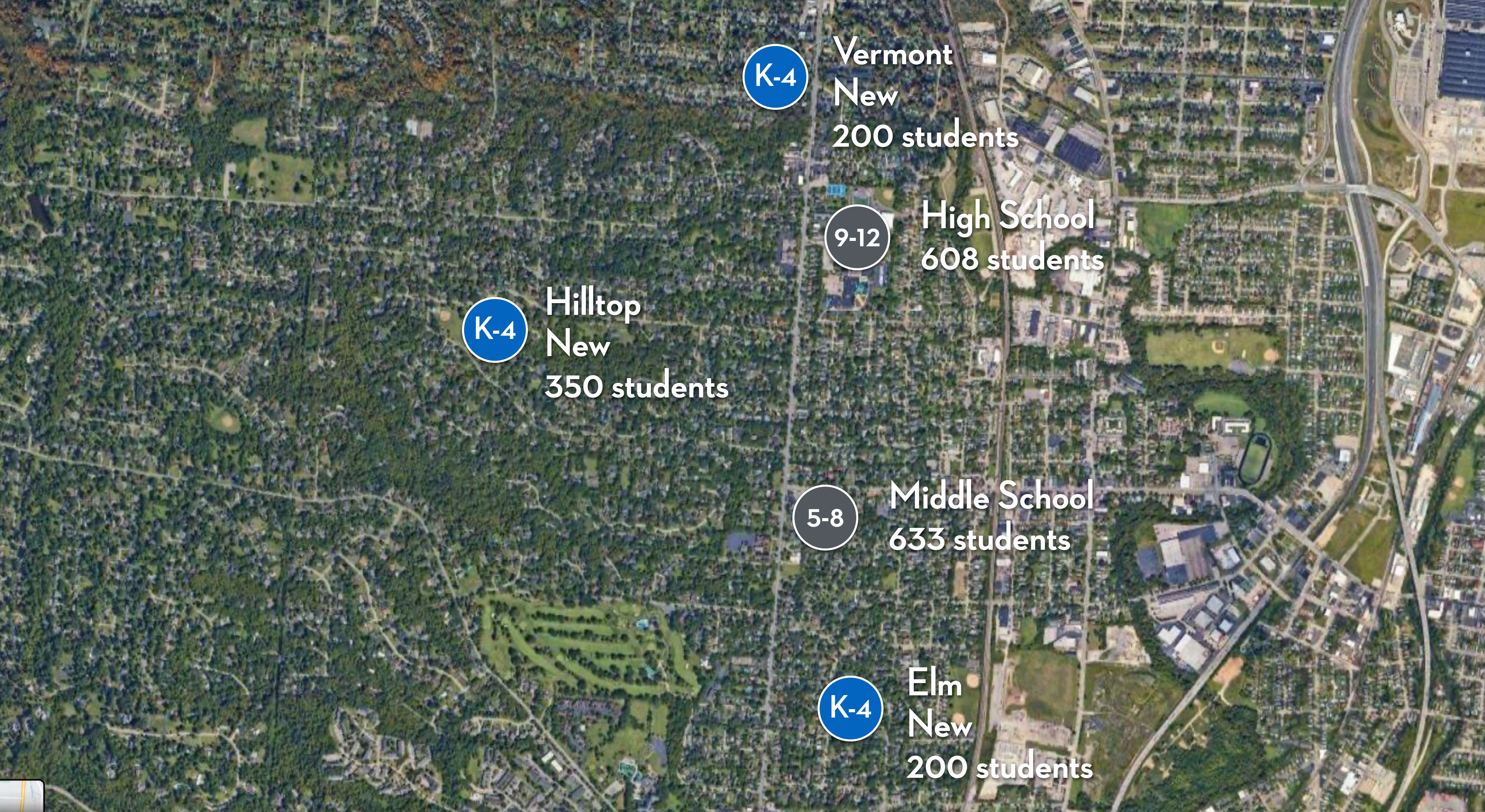
Grade Band Option

Do you think it is a good idea or bad idea to replace all 3 of the current primary schools with a new kindergarten through second grade school building at Elm, a new kindergarten through second grade school building at Vermont and a new school building for the third and fourth grades at Hilltop?



AGENDA

- Welcome
- Process
- Finance
- Community Survey Results
- **Final Master Plan Selection**
- Exploring Options for Temporary School sites
- Draft Project Schedule
- Next Steps
- Chat with Steering Committee



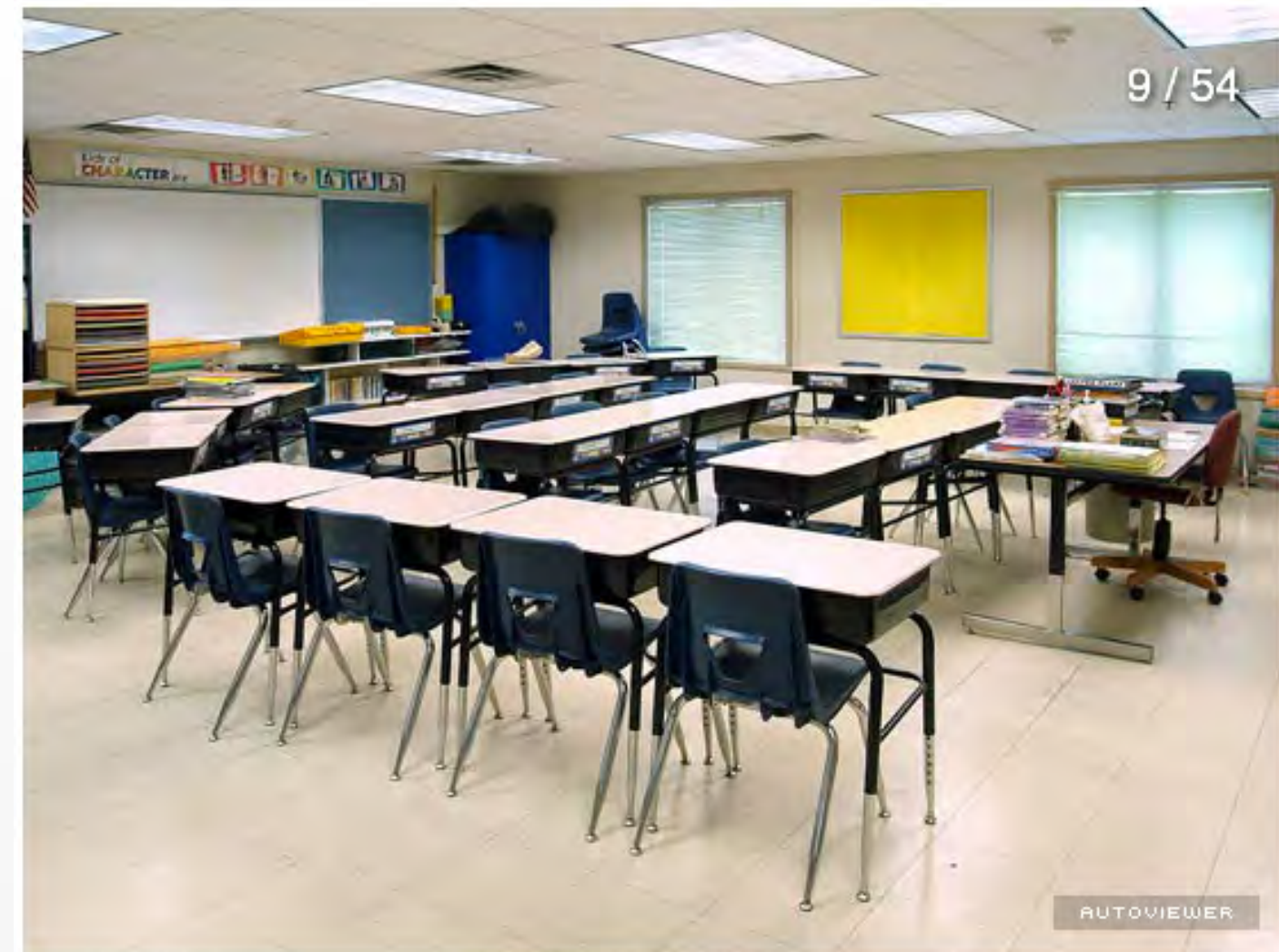
Option	Grades	Enrollment	Scope	sf	% increase from existing	sf/stud	\$/sf	Planning Budget
Option A1								
Elm	K-4	200	New	32,906	147%	165	\$535	\$17,604,461
Vermont	K-4	200	New	32,906	159%	165	\$535	\$17,604,461
Hilltop	K-4	350	New	47,733	155%	136	\$535	\$25,537,027
		750		113,544				\$60,745,949
Elm	K-4		Abatement / Demo	22,364			\$15	\$335,460
Vermont	K-4		Abatement / Demo	20,708			\$15	\$310,620
Hilltop	K-4		Abatement / Demo	30,880			\$15	\$463,200
				73,952				\$1,109,280
Elm	K-4	193	Swing Space					\$2,000,000
Vermont	K-4	204	Swing Space					\$2,000,000
Hilltop	K-4	277	Swing Space					\$2,500,000
								\$6,500,000
								\$68,355,229

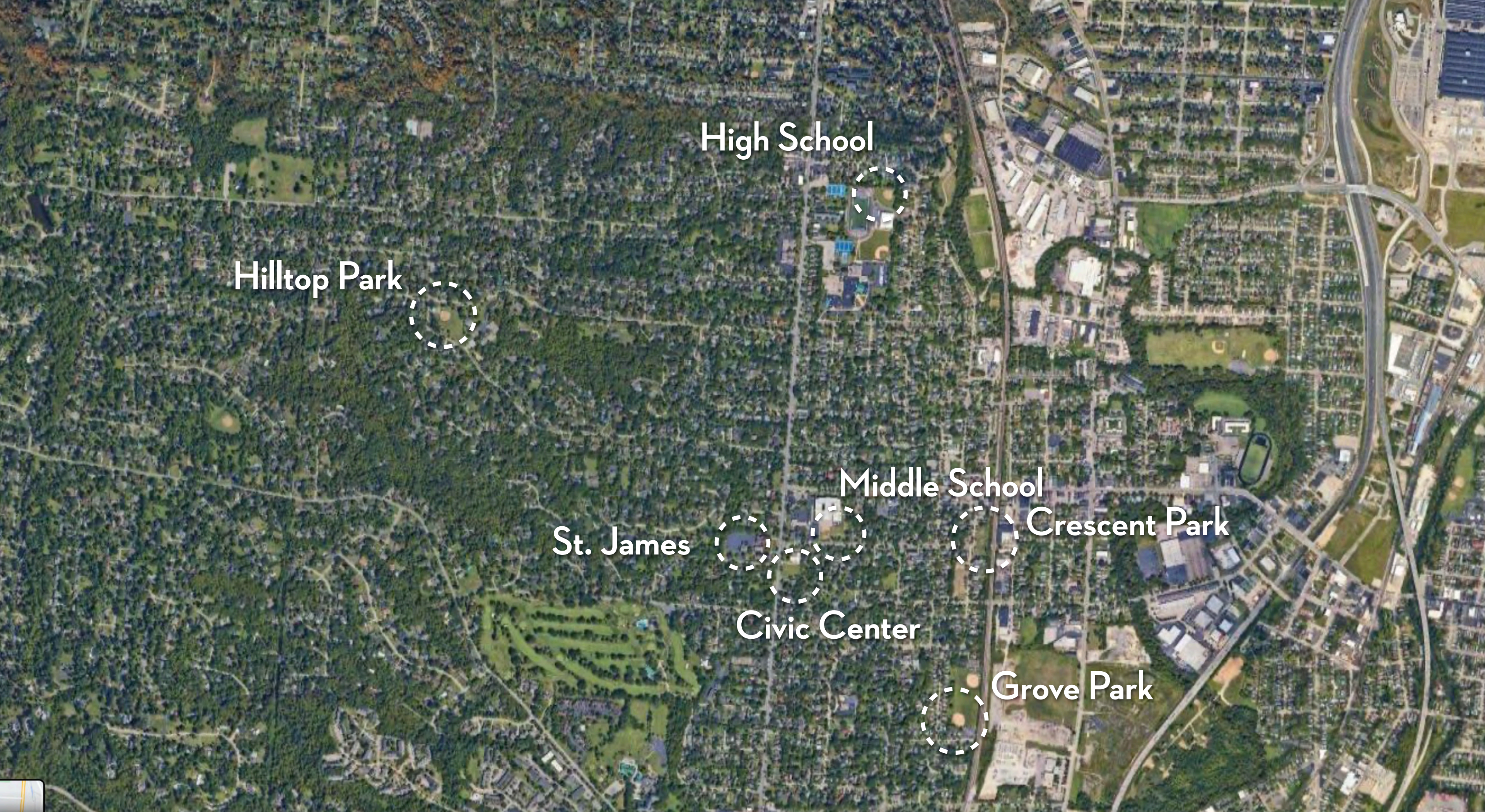
AGENDA

- Welcome
- Process
- Finance
- Community Survey Results
- Final Master Plan Selection
- **Exploring Options for Temporary School sites**
- Draft Project Schedule
- Next Steps
- Chat with Steering Committee

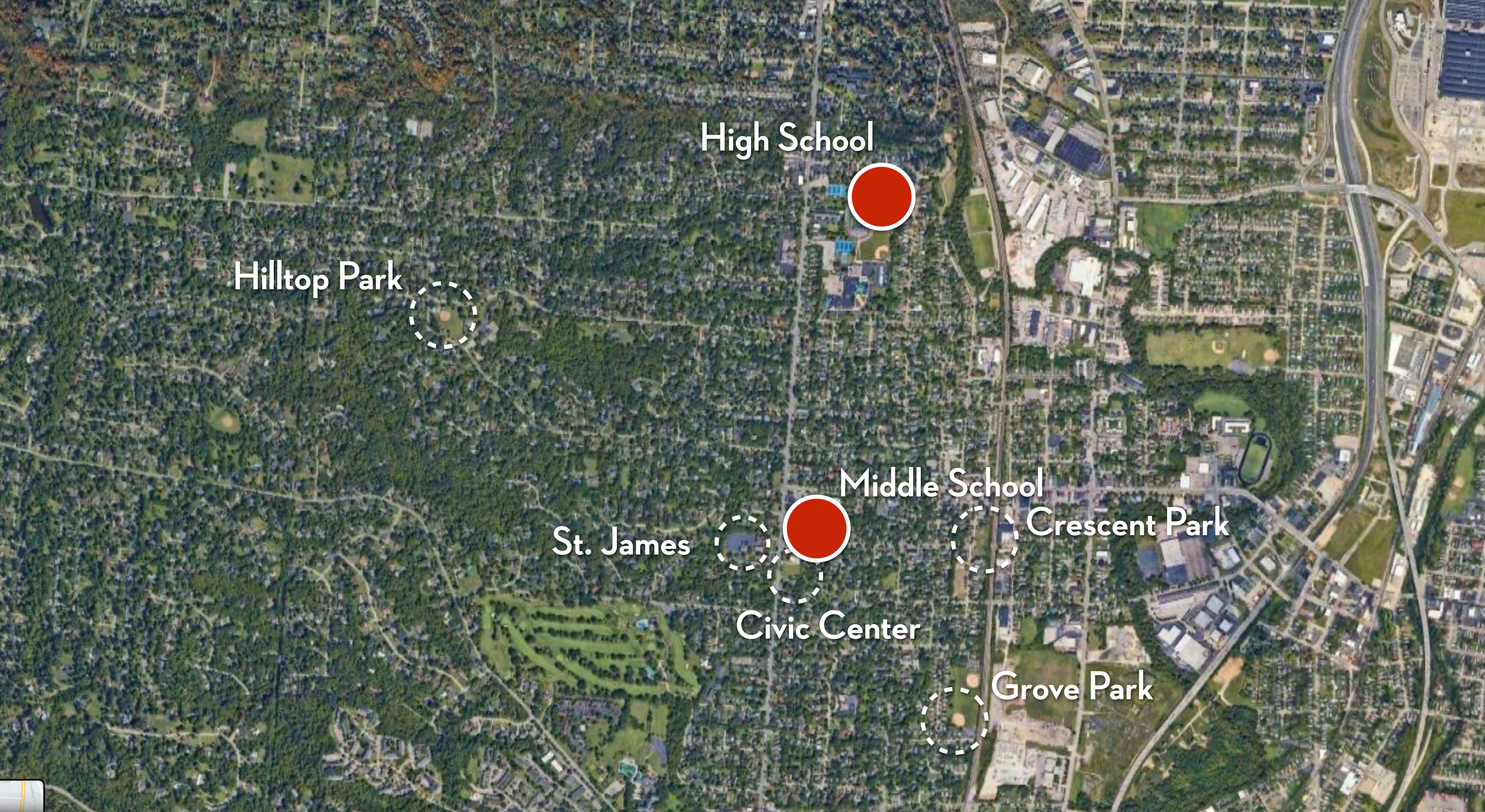


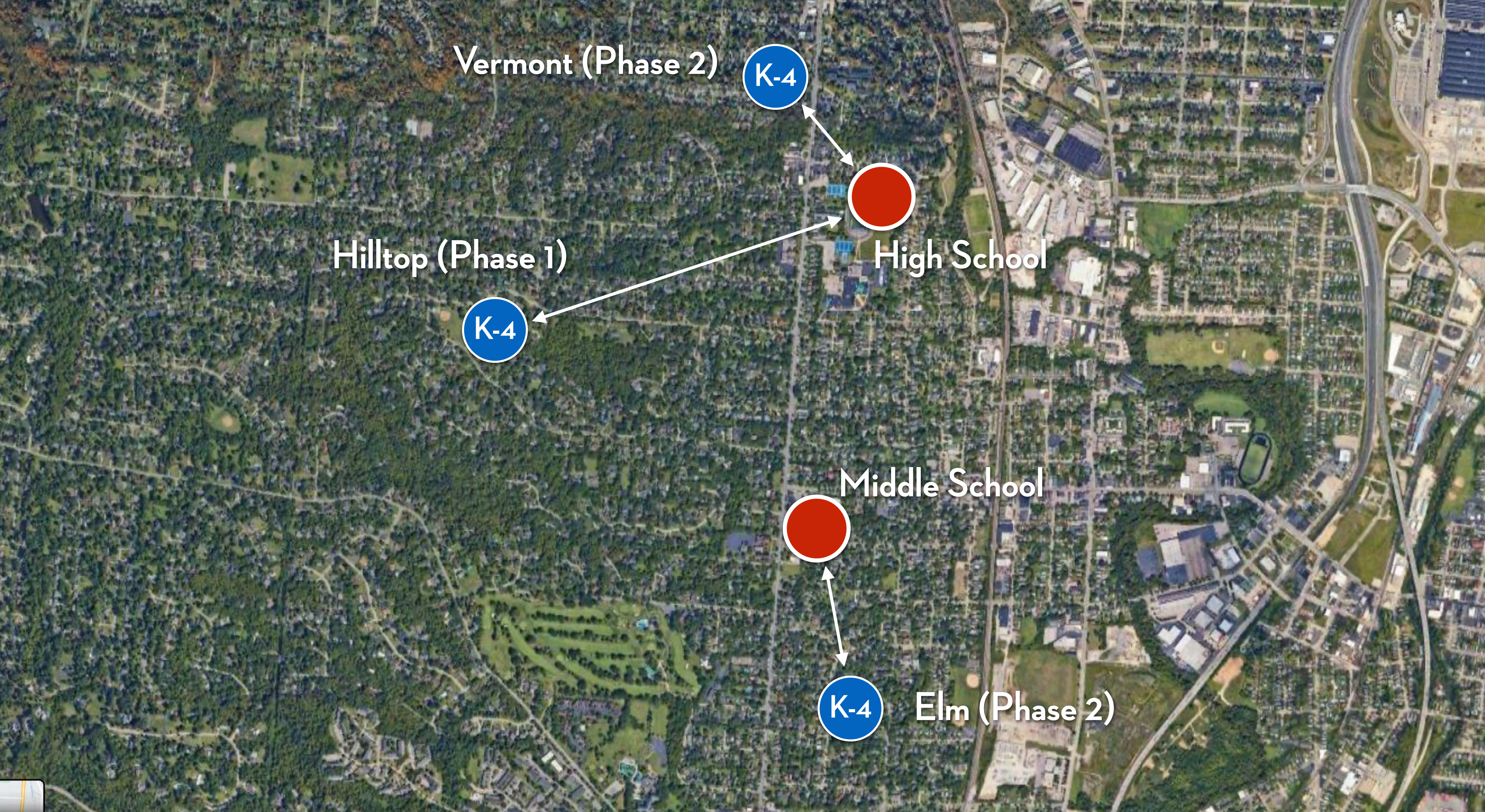
Wyoming Temporary Middle School



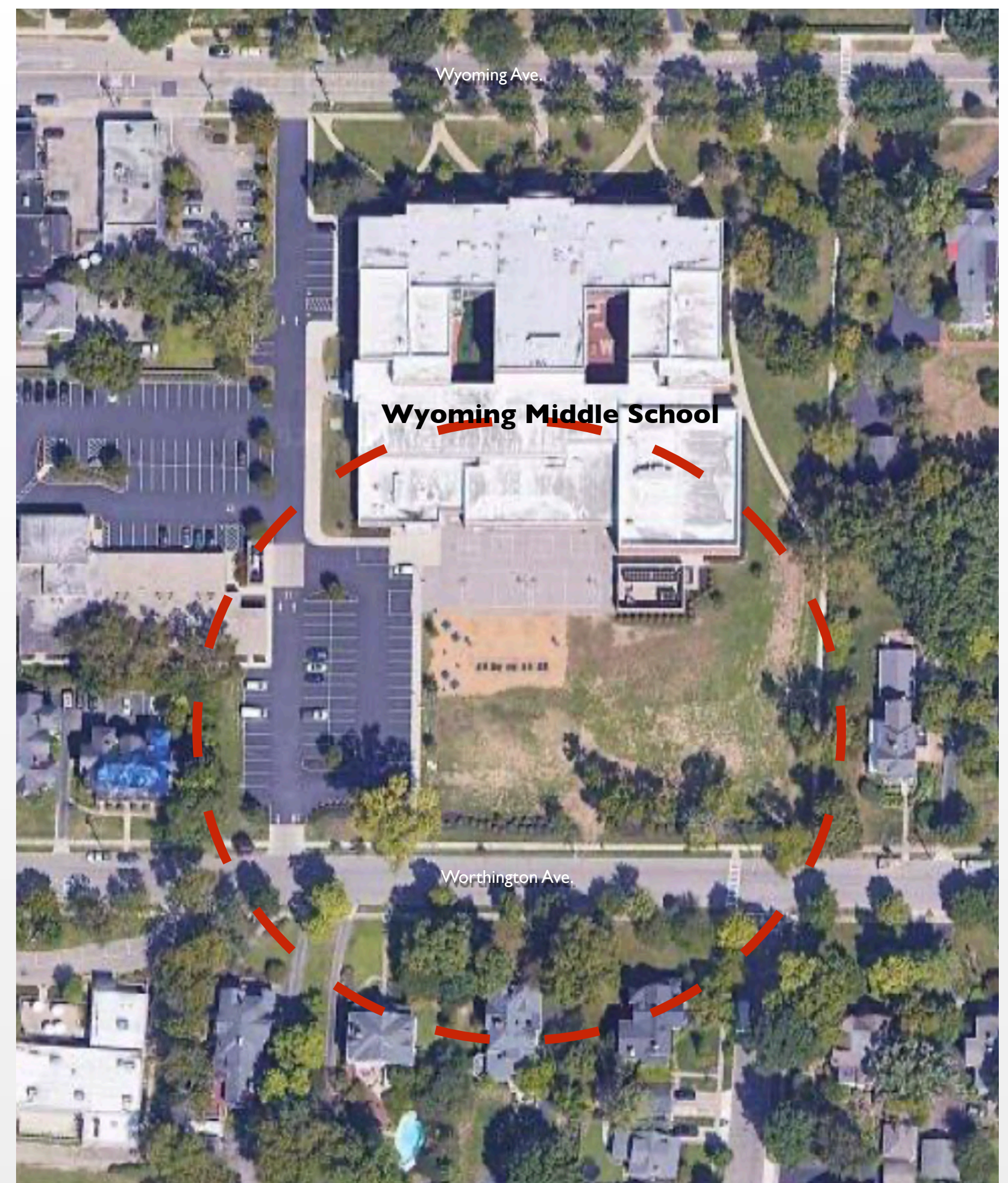


TEMPORARY SCHOOL SITE OPTIONS EXPLORED
Wyoming Primary Facilities Master Plan





TEMPORARY SCHOOL SITE - PHASED OPTION
Wyoming Primary Facilities Master Plan



WYOMING HS / MS - SWING SPACE OPTIONs

Wyoming Primary Facilities Master Plan



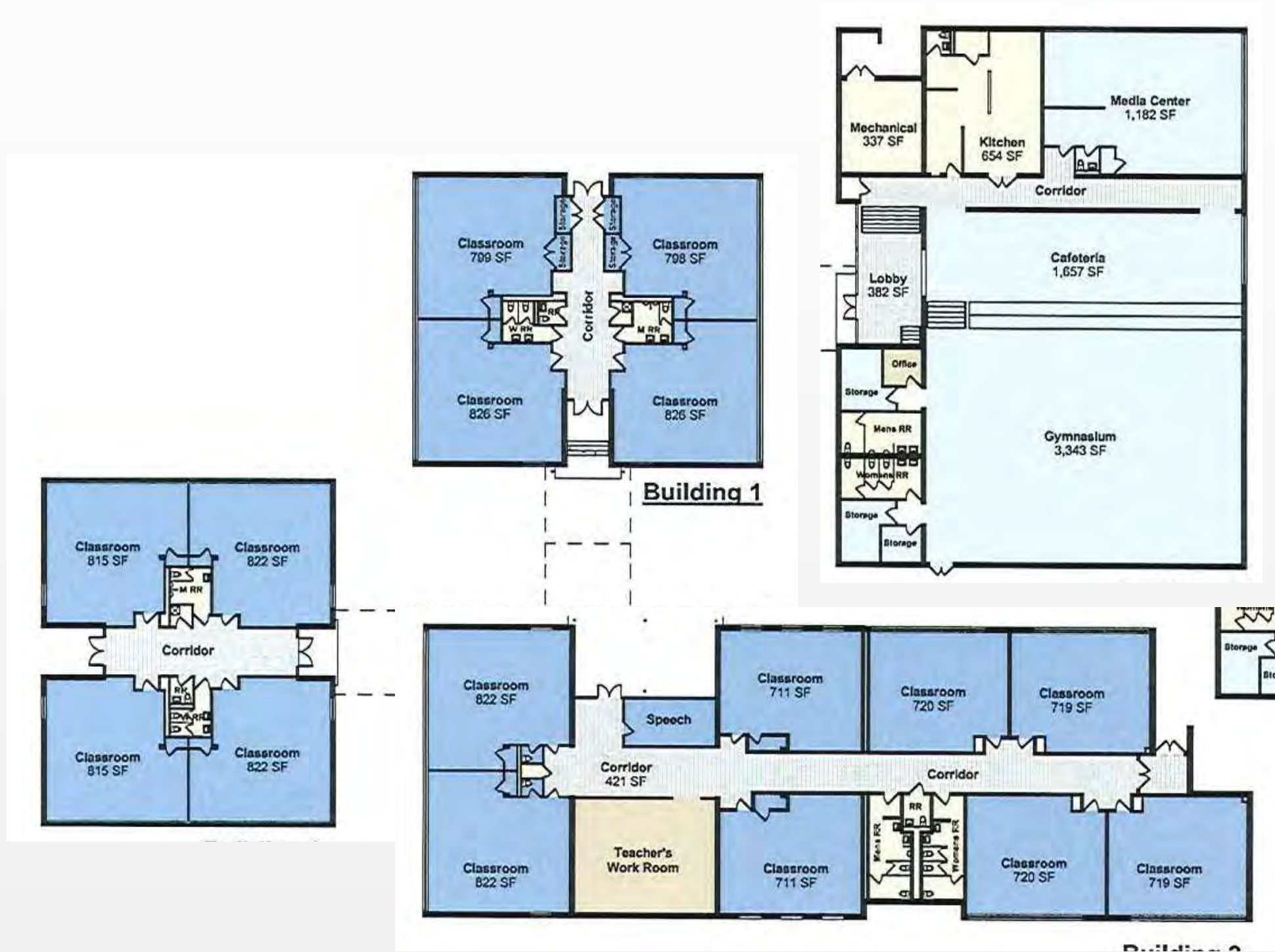
SWING SPACE OPTION

Wyoming Primary Facilities Master Plan

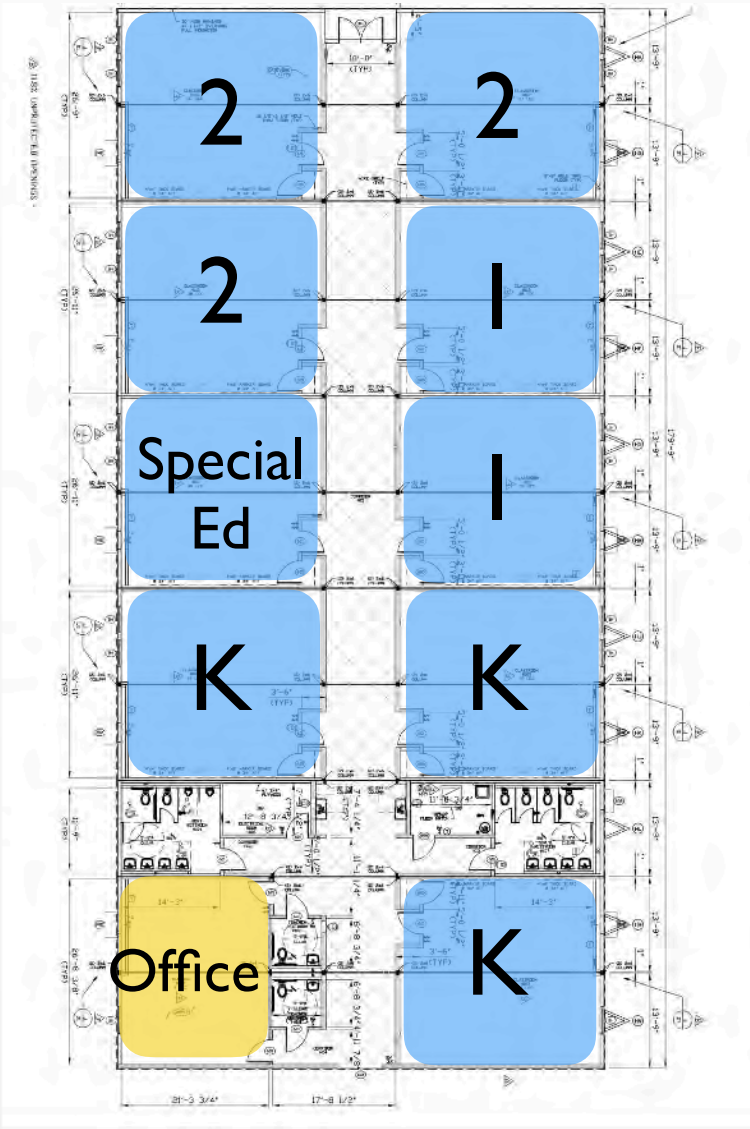


SWING SPACE OPTION

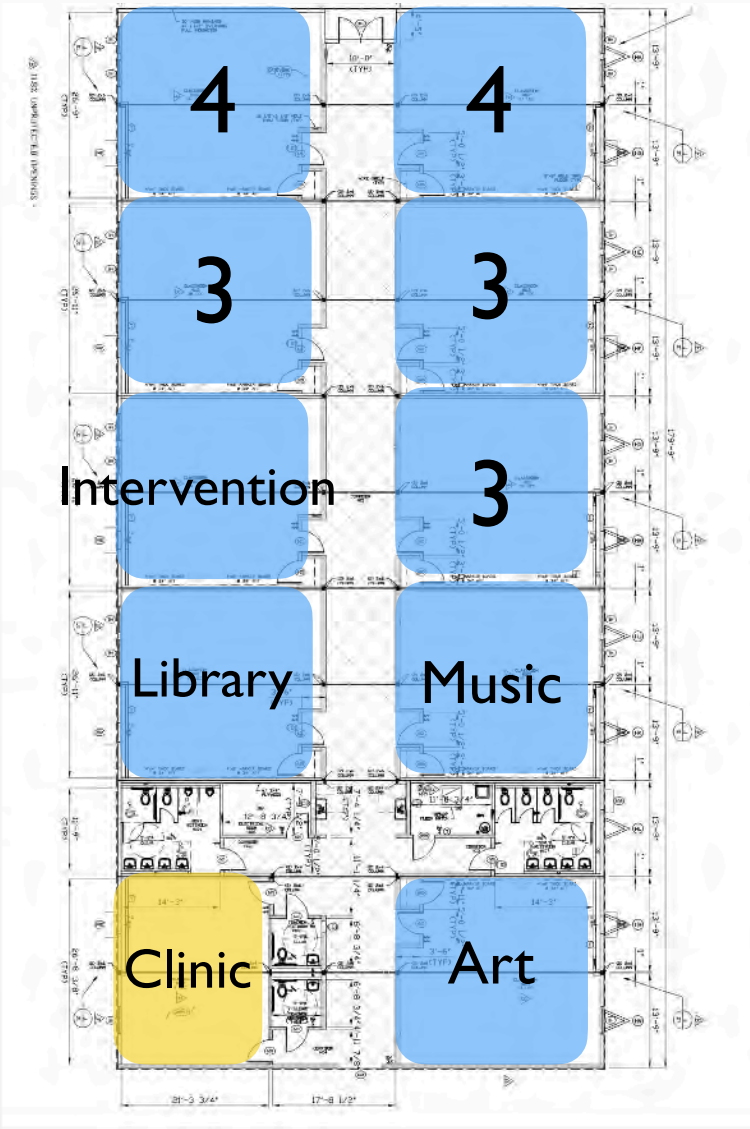
Wyoming Primary Facilities Master Plan



Existing Plan



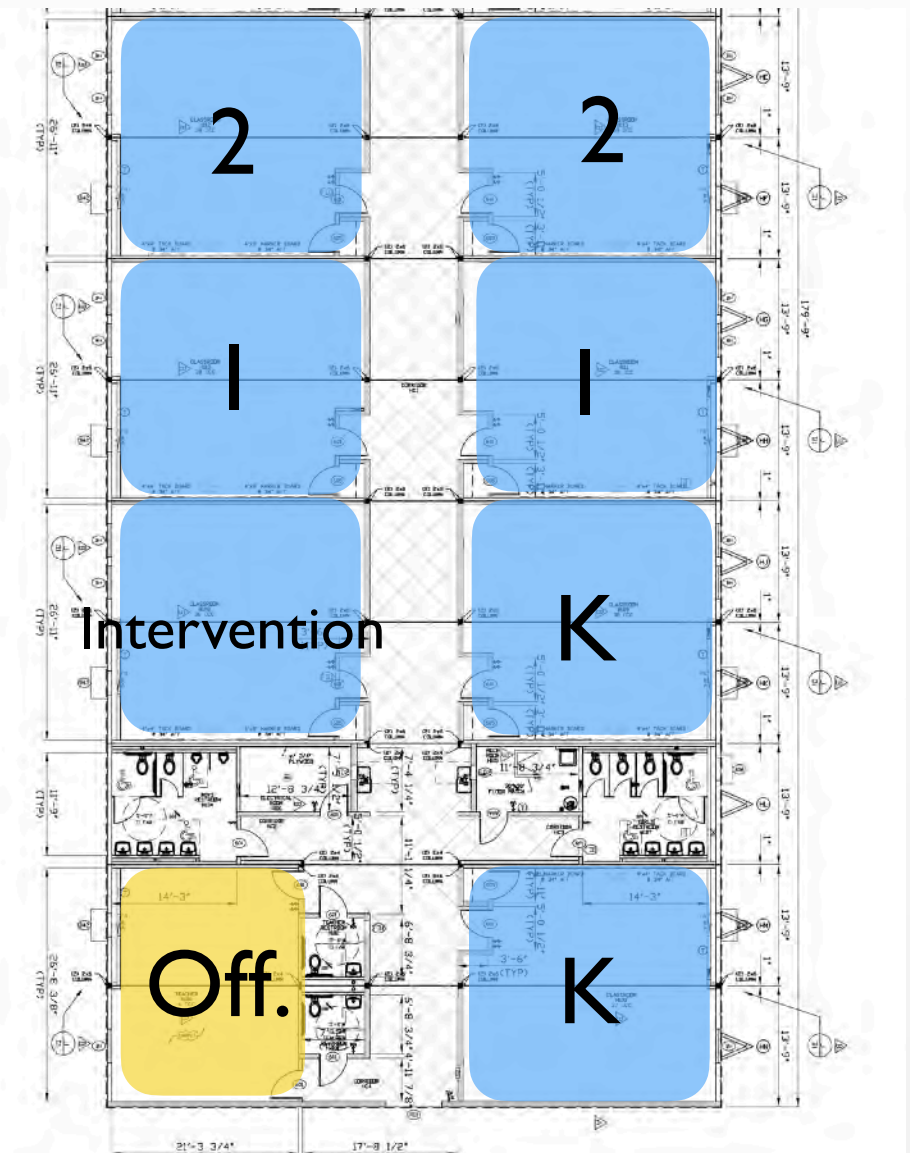
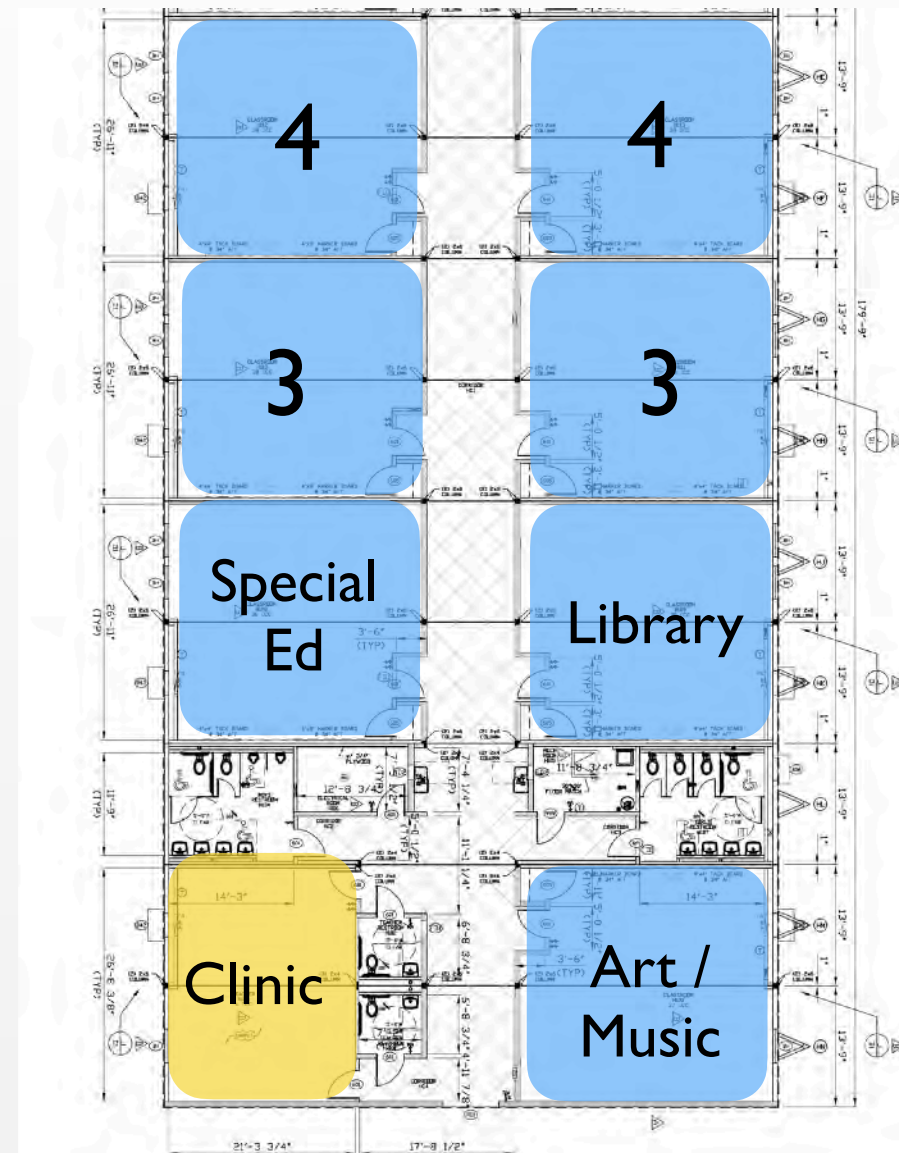
Proposed Building 1



Proposed Building 2

HILLTOP SWING SPACE

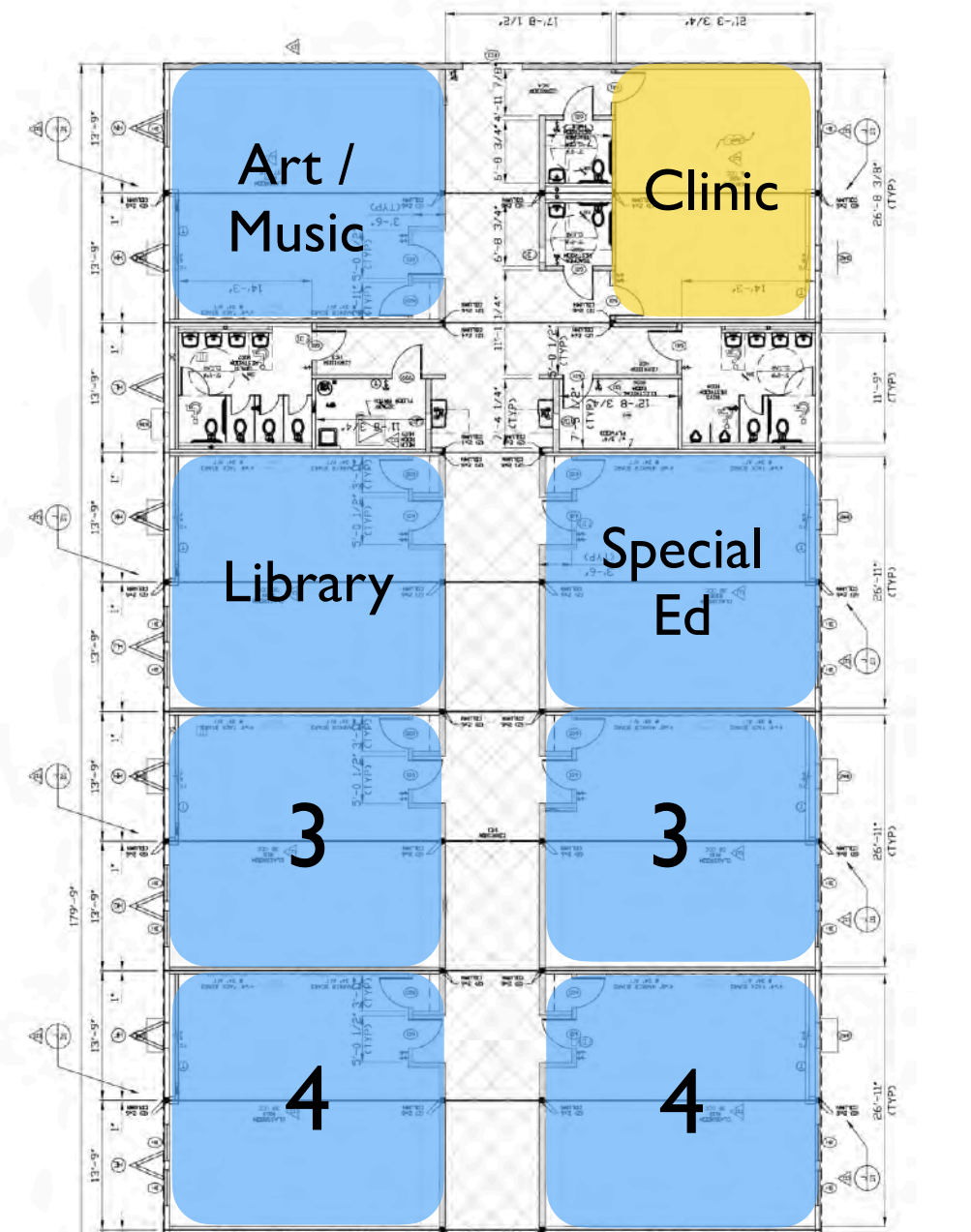
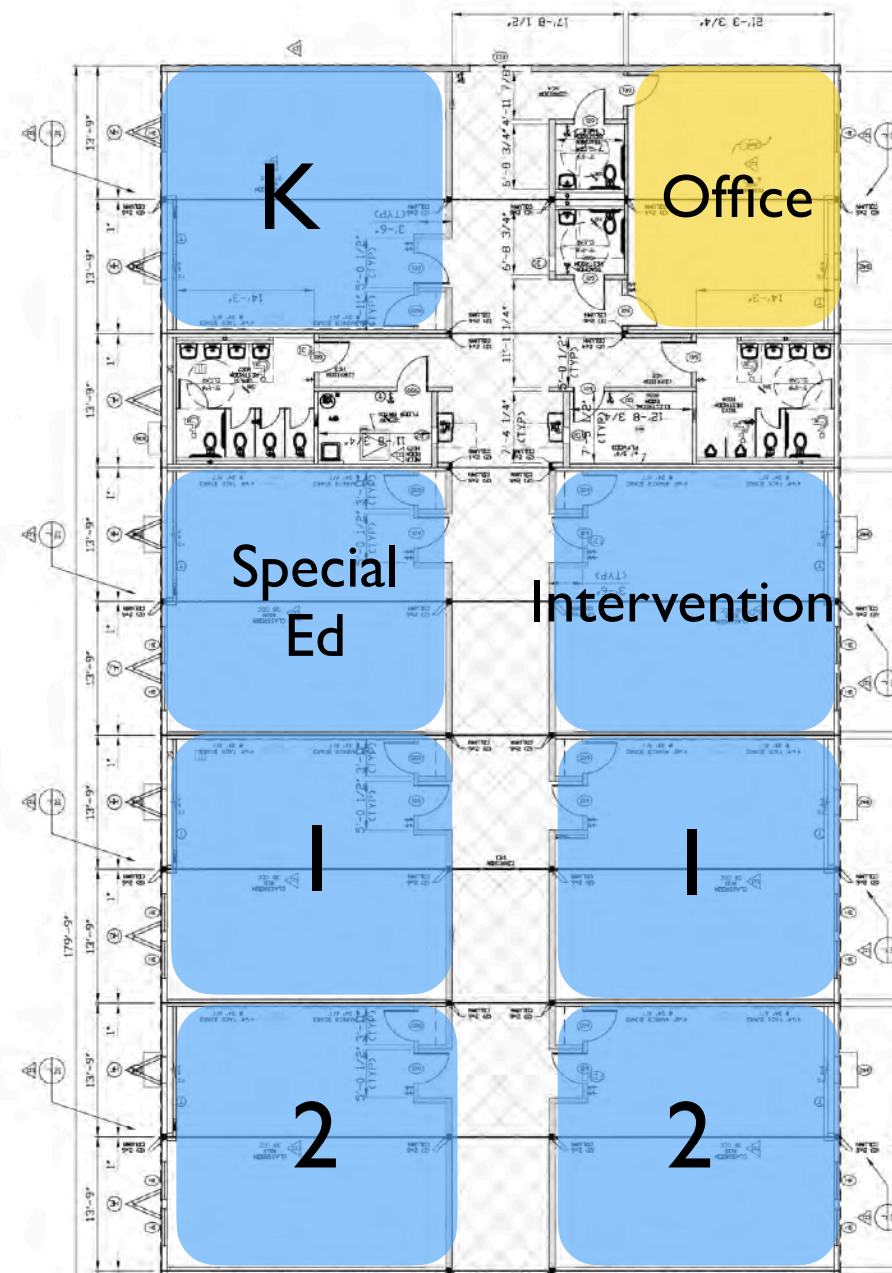
Wyoming Primary Facilities Master Plan



VERMONT SWING SPACE

Wyoming Primary Facilities Master Plan

Wyoming Primary Facilities Master Plan



ELM SWING SPACE

Wyoming Primary Facilities Master Plan

Wyoming Primary Facilities Master Plan



AGENDA

- Welcome
- Process
- Finance
- Community Survey Results
- Final Master Plan Selection
- Exploring Options for Temporary School sites
- **Draft Project Schedule**
- Next Steps
- Chat with Steering Committee

[illegible]

NEXT STEPS

- School District Website for more info
 - <https://www.wyomingcityschools.org/wcsfor-community/wps-facilities>
- Board Approval of Final Master Plan: June 2024
- Community Forum 4: Early Fall 2024
 - Temporary School Plan / Space Programs
 - Concept Site Plans / Floor Plans
- Community Vote: Nov. 5, 2024

NEXT STEPS

Wyoming Primary Facilities Master Plan

AGENDA

- Welcome
- Process
- Finance
- Community Survey Results
- Final Master Plan Selection
- Exploring Options for Temporary School sites
- Draft Project Schedule
- Next Steps
- **Chat with Steering Committee**